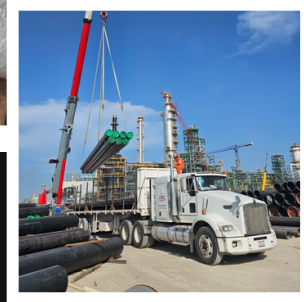


CATÁLOGO



EXPERTOS EN VENTA DE SUMINISTROS INDUSTRIALES

- Válvulas
- Bridas
- Juntas
- Tubería

¿QUIÉNES SOMOS?

SNOVAMX

SUMINISTROS INDUSTRIALES

Somos una empresa 100% Mexicana, dedicada a la venta de suministros industriales. Contamos con una amplia experiencia en el mercado, lo que nos permite comprender las necesidades de diversas industrias, participando así en sus proyectos, donde ofrecemos soluciones integrales. En SNOVAMX nuestro propósito es satisfacer las necesidades del cliente, ofreciendo suministros como tuberías, válvulas, conexiones entre otros muchos productos nacionales e internacionales.



VÁLVULAS DE HIERRO FUNDIDO

Check Valve



MSS SP-70
CAST IRON
ASTM A126 GR B
FF ENDS
CLASS 125
SIZES: 2" - 12"

Gate valve



MSS SP-70
CAST IRON
ASTM A126 GR B
FF ENDS
CLASS 125
SIZES: 2" - 12"

Globe Valve



MSS SP-70
CAST IRON
ASTM A126 GR B
FF ENDS
CLASS 125
SIZES: 2" - 12"

VÁLVULAS DE ACERO FORJADO



Lift Check Valve

API 602
CARBON STEEL A 105N
TRIM 8
THREADED ENDS
ASME
NACE
CLASS 800
SIZES: 1/2" - 2"



Gate Valve

API 602
CARBON STEEL A 105N
TRIM 8
THREADED ENDS
ASME
NACE
CLASS 800
SIZES: 1/4" - 2"



Globe Valve

VÁLVULAS DE ACERO FUNDIDO



Gate Valve

API 600
CAST STEEL A 216 GR
WCB TRIM 8
RF ENDS
ASME
CLASS 150/300/600
SIZES: 2" - 24"

FIG. 1118F/1318F/1618F



Check Valve

BS 1968
CAST STEEL A 216 GR
WCB TRIM 8
RF ENDS
ASME
CLASS 150/300/600
SIZES: 2" - 24"



Globe Valve

API 623 (BS 1873)
CAST STEEL A 216 GR
WCB TRIM 8
RF ENDS
ASME
CLASS 150/300/600
SIZES: 2" - 12"

VÁLVULAS DE MARIPOSA

200 PSI CLASS 125/150

*OPERADOR DE ENGRANAJES DISPONIBLE DESDE 1"



DUCTIL IRON BODY-
WAFFER TYPE
BUNA SEAT
PLATED DUCTIL IRON DISC
SIZES: 2" - 36"



DUCTIL IRON BODY-
WAFFER TYPE
BUNA SEAT
STAINLESS STEEL CF8M DISC
SIZES: 1" - 36"



DUCTIL IRON BODY-
LUG TYPE
BUNA SEAT
PLATED DUCTIL IRON DISC
SIZES: 2" - 36"



DUCTIL IRON BODY-
LUG TYPE
BUNA SEAT
STAINLESS STEEL CF8M DISC
SIZES: 1" - 36"

ACCESORIOS FORJADOS 3000/6000 PSI



Weldolet



Thredolet



Sockolet



Flexolet



Latrolet



Elbolet



Sweepolet



**Insert
weldolet**



Nipolet



Brazolet



Coupolet



90° Elbow



45° Elbow



**Reducing
Tee**



Tee



Union



**90° Street
Elbow**



Cross



Coupling

ACERO INOXIDABLE

TUBERÍAS & ACCESORIOS



TUBOS & ACCESORIOS



"Y" TYPE & BASKET STRAINERS

Productos fabricados: Titan FCI tiene la capacidad de diseñar y fabricar una variedad de productos según sus especificaciones exactas.

YS 12-CI

CLASS 250
THREADED
SIZES: 1/4" - 3"



YS 58-CI

CLASS 125
FLANGED
SIZES: 2" - 24"



YS 61-CS / YS 61-SS

CLASS 150
FLANGED
SIZES: 1/2" - 24"



YS 63-CS / YS 63-SS

CLASS 300
BUTT WELD
SIZES: 1/2" - 12"



BS 35-CS / BS 35-SS

CLASS 150/300
THREADED / SOCKET WELD
SIZES: 3/8" - 3"



BS 25-CI / BS 25F-CI

CLASS 125
QUICK-OPEN COVER
SIZES: 3/8" - 3" (THREADED)
SIZES: 1" - 8" (FLANGED)



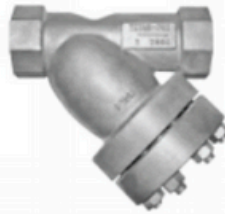
BS 55-CI

CLASS 125
FLANGED
CLAMP COVER
SIZES: 2" - 12"



YS 83-CS / YS 83-SS

CLASS 1500
THREADED
SIZES: 1/2" - 3"



YS 84-CS / YS 84-SS

CLASS 1500
SOCKET WELD
SIZES: 1/2" - 3"



VÁLVULAS DE RETENCIÓN DE DISCO SIMPLE & DOBLE

CV 42-L-CS / CV 42-L-SS

CLASS 150
WAFFER & LUG TYPE DUAL DISC
CARBON & STAINLESS
SIZES: 2" - 48"



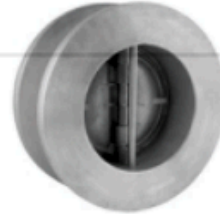
CV 50-DI

CLASS 150/300
FLANGED & TREATED
DUCTILE IRON,
CARBON & STAINLESS
SIZES: 3/4" - 36"



**CV 46-CS / CV 46-SS
CV 47-CS / CV 47-SS**

CLASS 600/900
WAFFER - DUAL DISC
CARBON & STAINLESS
SIZES: 2" - 48"



CV 44-CS / CV 44-SS

CLASS 300
WAFFER - DUAL DISC
CARBON & STAINLESS
SIZES: 2" - 48"



CV 12-CS / CV 12-SS

CLASS 150
SHORT PATTERN-WAFER
CARBON & STAINLESS
SIZES: 2" - 24"



CV 32-CS / CV 32-SS

CLASS 150
WAFFER - SWING
CARBON & STAINLESS
SIZES: 2" - 12"



CV 31-DI

CLASS 150
WAFFER - SWING
DUCTILE IRON
SIZES: 2" - 12"



CV 41-DI

CLASS 150
WAFFER - DUAL DISC
DUCTILE IRON
SIZES: 2" - 48"



VÁLVULAS DE BOLA

Flanged End

CLASS: 150/300/600
A216 WCB BODY
FULL PORT - 6D API 608
NACE - 316SS TRIM
ASME B16.10/B16.5
TRUNNION & FLOATING TYPE
SIZES: 1"-12"



5112FF / 5112TF / 5312FF /
5312TF / 5612FF / 5612TF

1000/2000 PSI Reduced Port

STAINLESS STEEL / CARBON / FORGED
NACE
ASME B1.20.1
API 598
1 PC BODY
SIZES: 1/4" - 2"



1010SR

1010CR

2010CR

1000 PSI Full Port

STAINLESS STEEL / CARBON
NACE
ASME B1.20.1
API 598
2 PC BODY
SIZES: 1/4" - 4"



1020SF

1020CF

1000 PSI Full Port

Stainless Steel / Carbon
NACE
ASME B1.20.1
API 607
3 PC BODY
SIZES: 1/4" - 4"



1030SF

1030CF

2000 PSI Full Port

Stainless Steel / Carbon
NACE
ASME B1.20.1
API 598
2 PC BODY
SIZES: 1/4" - 2"



2020SF

2020CF

3000 PSI Full Port

Stainless Steel / Carbon
NACE
ASME B1.20.1
API 607
2 PC BODY
SIZES: 1/4" - 2"



3020SF

3020CF

6000 PSI Full Port

Stainless Steel / Carbon
NACE
ASME B1.20.1
API 598
2 PC BODY
SIZES: 1/4" - 1/2" FULL PORT
2" REDUCED PORT



6020SF

6020CF

BDT Series

1000/2000 PSI
DUCTILE IRON BODY
STAINLESS STEEL BALL
NACE
1" FULL PORT
2"-4" REDUCED PORT



FIG. BDT1/BDT2

BCT Series

3000/5000 PSI
CARBON STEEL BODY
STAINLESS STEEL BALL
NACE
2" REDUCED PORT



FIG. BCT3/BCT5

CCT Series

3600 - 5000 WOG
CARBON STEEL SWING CHECK
CF8M DISC VITON SEAT
NACE
SIZES: 1" & 2"



FIG. CCT3 / CCT5

CDT Series

2000 WOG
DUCTILE IRON SWING CHECK
CF8M DISC VITON SEAT
NACE
SIZES: 1", 2", 3" & 4"



FIG. CDT2

VÁLVULAS DE CAMPO PETROLERO

VÁLVULAS DE AGUJA

Mini Needle Valve

NACE - 316 SS & CARBON
6000 PSI @ 200° (SOFT SEAT)
SIZES: 1/4" ONLY



Needle Valve

NACE - 316 SS & CARBON
6000 PSI @ 200° (SOFT SEAT)
10000 PSI @ 200° (HARD SEAT)
SIZES: 1/4" - 1"



Multi-Port Needle Valve

NACE - 316 SS & CARBON
6000 PSI @ 200° (SOFT SEAT)
10000 PSI @ 200° (HARD SEAT)
SIZES: 1/2" ONLY



Needle Valve W/Bleed

NACE - 316 SS & CARBON
6000 PSI @ 200° (SOFT SEAT)
10000 PSI @ 200° (HARD SEAT)
SIZES: 1/4" - 1" ONLY



VÁLVULAS DE MARIPOSA



VÁLVULAS DE GUILLOTINA



VÁLVULAS DE ALTO RENDIMIENTO

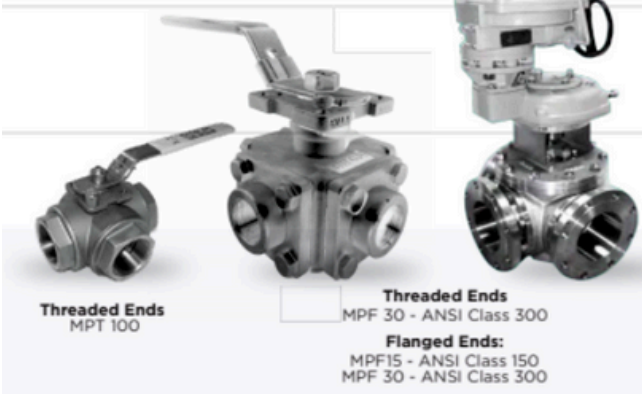
Size Range: 2" a 24",
opcional a 120"
ANSI Clase 150/300/600/900



3 & 4 WAY MULTI-PORT BALL VALVES

3 PC HIGH PERFORMANCE BALL VALVES

FLANGED BALL VALVES



Threaded Ends
MPT 100

Threaded Ends
MPF 30 - ANSI Class 300
Flanged Ends:
MPF15 - ANSI Class 150
MPF 30 - ANSI Class 300



MODELS:
HPF50 - 316SS
HPF40 - WCB



MODELS:
F150 - Class 150
F300 - Class 300

VÁLVULAS



STAINLESS STEEL GLOBE VALVES

ASME B16.34
(API 600 WALL THICKNESS),
API 603 DESIGNS

BALL VALVES

API 607, API 608,
API 6D, MSS-SP-110
ANSI B16.34 DESIGNS

STAINLESS STEEL GATE VALVES

API 600 - API 603
API 602 & WOG DESIGNS

CHECK VALVES

ANSI B16.34
(API 600 WALL THICKNESS)
DESIGN

BRIDAS

Acero Carbono

ANSI/ASME B16.50

ACERO FORJADO SA/A-105N

CLASE 150/300/600/900/1500/2500

Tamaños: 1/2"-54"

BANDERAS REDUCTORAS DISPONIBLES BAJO PEDIDO.

LAP JOINT

BLIND

SLIP ON

SOCKET WELD

THREADED

WELDING NECK



JUNTAS



CG, CGI & RING TYPES

CG & CGI TYPE ANSI/
ASME B16.20
MATERIAL: STAINLESS STEEL 304L & 316L
CLASS 150/300/600
FILLER GRAPHITE
SIZES: 1/2"-36"

ESPÁRRAGOS



B7P SERIES

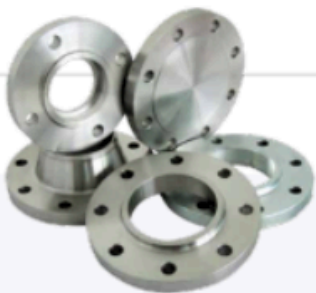
CARBON STEEL A-193 GR B7 & A-194 GR 2H
ZINC PLATED COATING
SIZES: 1/2"- 1 7/8"
LENGTH: 2 1/2" TO 15 1/2"

ANILLOS DE RESPALDO



CARBON STEEL SA/A105
CLASS 125/150
ANSI B16.5
SIZES: 2"-24"

BRIDAS & ACCESORIOS



Acero inoxidable



Expansion Joint



Sleeve Couplings



Process Gauge



Bi-metal
Thermometers


CONTACTO

Solicita tu cotización con nosotros.


Dirección

Isabel de la Parra No. 65. Ixtacomitan 2da sección,
Centro, Tab. México, C.P. 86144

Correo

 [jespinosa@snoVamx.com](mailto:jespিনosa@snoVamx.com)

Ventas

 993 187 0239 / 921 229 4496

Sitio web

 www.snoVamx.com

